

LAMP FACTORY LONDON

All dimensions in MM

Lamp type 2 way E14 EU,UK 2 way E12 US

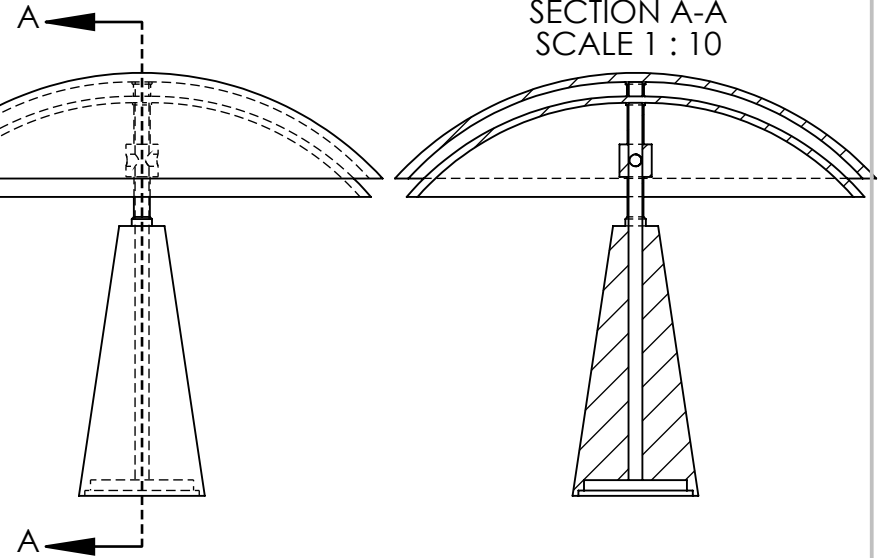
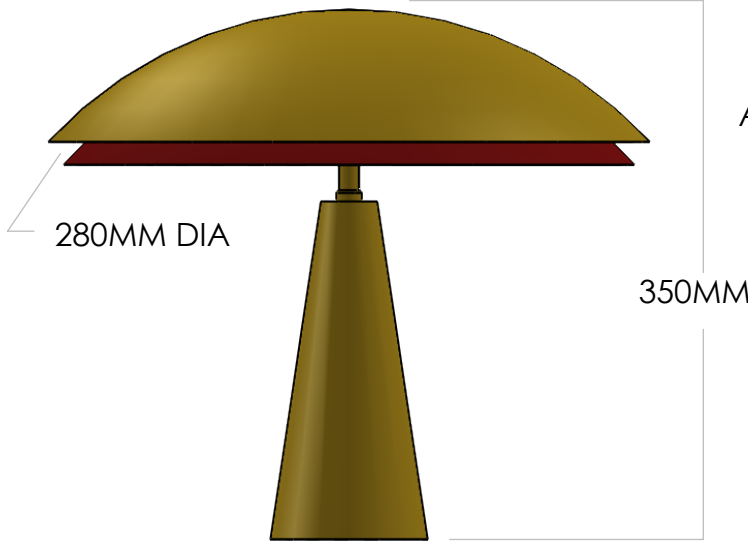
Weight: 5.7KG

Voltage: EU,UK 220V US 110V

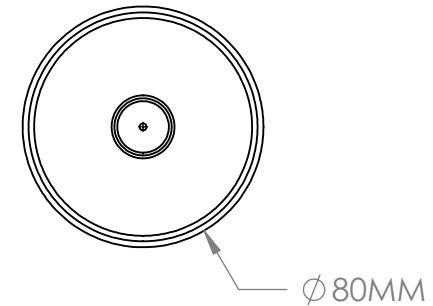
Finishes: All finishes available

Lead time: 6-8 Weeks

FRONT VIEW



BASE VIEW



PROPRIETARY AND CONFIDENTIAL
THE INFORMATION CONTAINED IN THIS DRAWING IS THE SOLE PROPERTY OF <INSERT COMPANY NAME HERE>. ANY REPRODUCTION IN PART OR AS A WHOLE WITHOUT THE WRITTEN PERMISSION OF <INSERT COMPANY NAME HERE> IS PROHIBITED.

		UNLESS OTHERWISE SPECIFIED:
		DIMENSIONS ARE IN INCHES
		TOLERANCES:
		FRACTIONAL \pm
		ANGULAR: MACH \pm BEND \pm
		TWO PLACE DECIMAL \pm
		THREE PLACE DECIMAL \pm
		INTERPRET GEOMETRIC TOLERANCING PER:
		MATERIAL Bespoke
		FINISH Bespoke
NEXT ASSY	USED ON	
APPLICATION		DO NOT SCALE DRAWING

	NAME	DATE
DRAWN	SS	
CHECKED		
ENG APPR.		
MFG APPR.		
Q.A.		
COMMENTS:		

TITLE: The Chelsea Table Lamp

SIZE	DWG. NO.	REV
A	ChelseaTL	
SCALE: 1:20		WEIGHT:
		SHEET 1 OF 1